

Open Channel Discharge Measurement

m2mLOGGER®
remote monitoring eco-system



Open Channel Discharge Measurement with telemetry

Features

- ✔ Non-contact sensors for maintenance free operation.
- ✔ Latest Radar technology for maximum accuracy.
- ✔ Advanced Touch screen IoT Gateway for real time telemetry.
- ✔ 4G and VSAT connectivity options.
- ✔ GPS synchronization.



IOT GATEWAY & DISCHARGE CONTROLLER

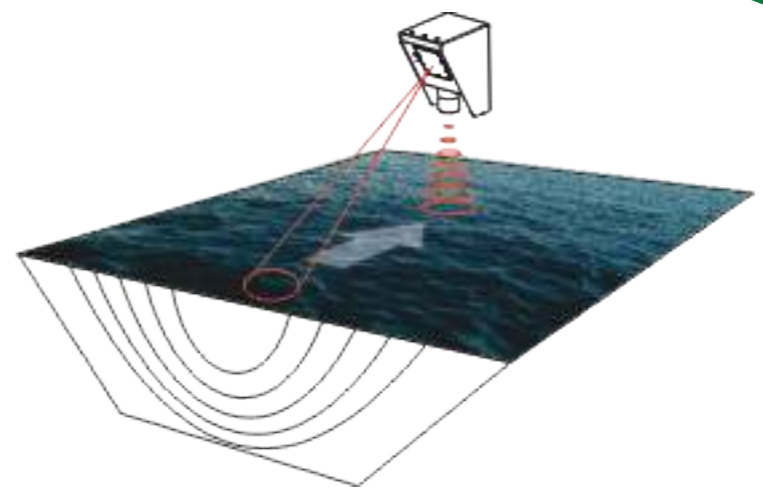


REAL TIME CLOUD



Introduction

The measurement of water surface velocities to determine discharge in rivers and open channels is one of the oldest measuring methods in hydrometry, well-tried and easy operably since centuries with the aid of floaters. The determination of discharge by surface velocity measurements is also covered by various hydrometric standards and guidelines such as ISO 748 "Hydrometry – Measurement of liquid flow in open channels using current meters or floats". While floaters are applicable for in-situ measurements only the surface velocity radar provides 24/7 real-time monitoring with high measurement accuracy, low power consumption and minimized maintenance. In addition, contactless measurements benefit from being unaffected by sediments, mud or floating debris in the water.



Sensors



ACOUSTIC DOPPLER CURRENT PROFILER



LEVEL MEASUREMENT RADAR



SURFACE VELOCITY RADAR

Applications

- ✔ Open Channel discharge measurements for: Rivers, Streams, Canals, Process water canals.
- ✔ Non-contact level measurement for open channels.
- ✔ Non-contact surface velocity measurement for open channels.
- ✔ Flood early warning system.
- ✔ River current profiling.



M2MLogger

An ISO 9001:2015 Certified Company

HEAD OFFICE

Plot 67, Street 1-B,
Friends Colony Industrial Area,
Shahdara, Delhi - 110095
INDIA

Telephone +91 11 41002487

Mobile +91 74280 82286

Email sales@m2mlogger.com

Web www.m2mlogger.com

WORKS

B-8, First Floor
F.I.E. Patparganj Industrial Area
Delhi - 110092
INDIA

